

PCB “FAB-IN-A-BOX”

MASTER REFERENCE OF ALL “PULSAR” PRODUCTS:

PCB “Fab-In-A-Box”	182-1027-ND (Shown Here)
- TTS Transfer Paper	182-1003-ND
- GreenTRF film	182-1021-ND
- WhiteTRF film	182-1022-ND
- PCB (Single Sided)	182-1017-ND
- PCB (Double Sided)	182-1018-ND
DecalPRO®	182-1026-ND
“Combo” (both kits)	182-1028-ND
GBC® Laminator	182-1029-ND



ABOUT THIS KIT:

The PCB “Fab-In-A-Box” kit is comprised of three main components: transfer paper, 1/2oz copper laminate and two special “foils” (one for the toner circuit image to prevent “pitting” of the copper, the other as “white text” for your silkscreen layer).

There is one item that is required to make this system work that is not included in the kit called the Laminator. We keep this item separate from the kit because some folks either already have the proper laminator or prefer to obtain a used one through eBay or other online channels.



The GBC® brand laminator required for this kit is stocked by DigiKey (see Hyperlinks above for product number and placing an order). Of particular note

here is that this laminator is the same one used with our “sister-kit” called “DecalPRO” for making very professional looking dry-transfer, rub-down graphics for the outside of your enclosures and panels. (See Hyperlinks above to order this laminator).

Besides the laminator, the only other household-type items you will need are...



Paper Cutter



Tray of Water



Paper Towel



Can of Acetone

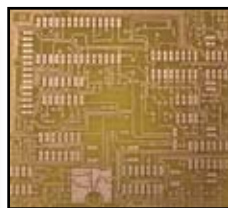
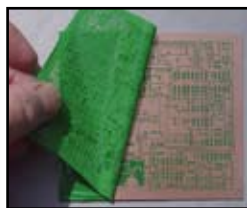
We’ve taken the headache out of making single and double-sided printed circuit boards. With this kit, an off the shelf laminator and your laser printer (or photo-copier) you can knock out high resolution boards very fast.



As an example, to make a double-sided, thru-hole type PCB with a silk-screen layer can be completely finished in under 15 minutes. The best part is that there is no darkroom to EVER deal with and if you follow our newest technique (explained on our website), you don’t even need an etching tank. Etching now only takes about 45 seconds. TRUE!

KIT CONTENTS:

- TTS Transfer Paper 8-1/2" x 11" 10-sheet packs (2)
- PCB: Single-sided 8"x10", .032", 1/2oz (2)
- PCB: Double-sided 8"x10", .032", 1/2oz (2)
- GreenTRF (trace protect) 8" x 15' Flat Pack
- WhiteTRF (silk-screen) 8" x 15' Flat Pack
- Practice Images Circuit image samples
- Instructions 2-pg “Quick-Start”



Pulsar
PROFESSIONAL *fx*

21 Carriage Drive • Crawfordville, FL 32327-2496

For more information about this product we invite you to visit our website at: www.pcbprof.com or call us at (850) 926-2009 9am-5pm EST