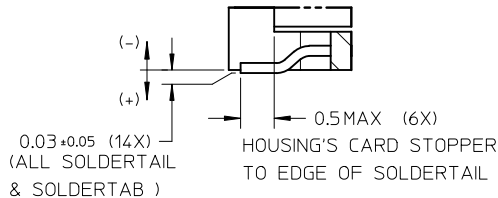
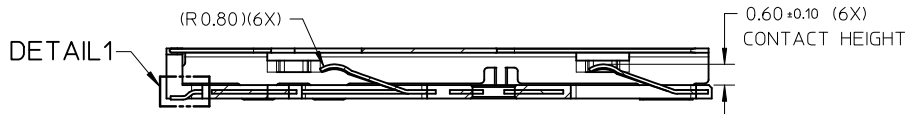
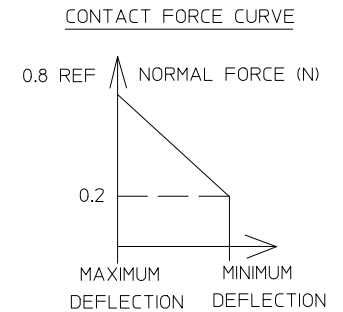
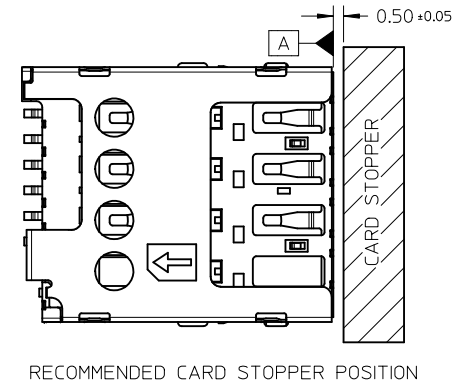
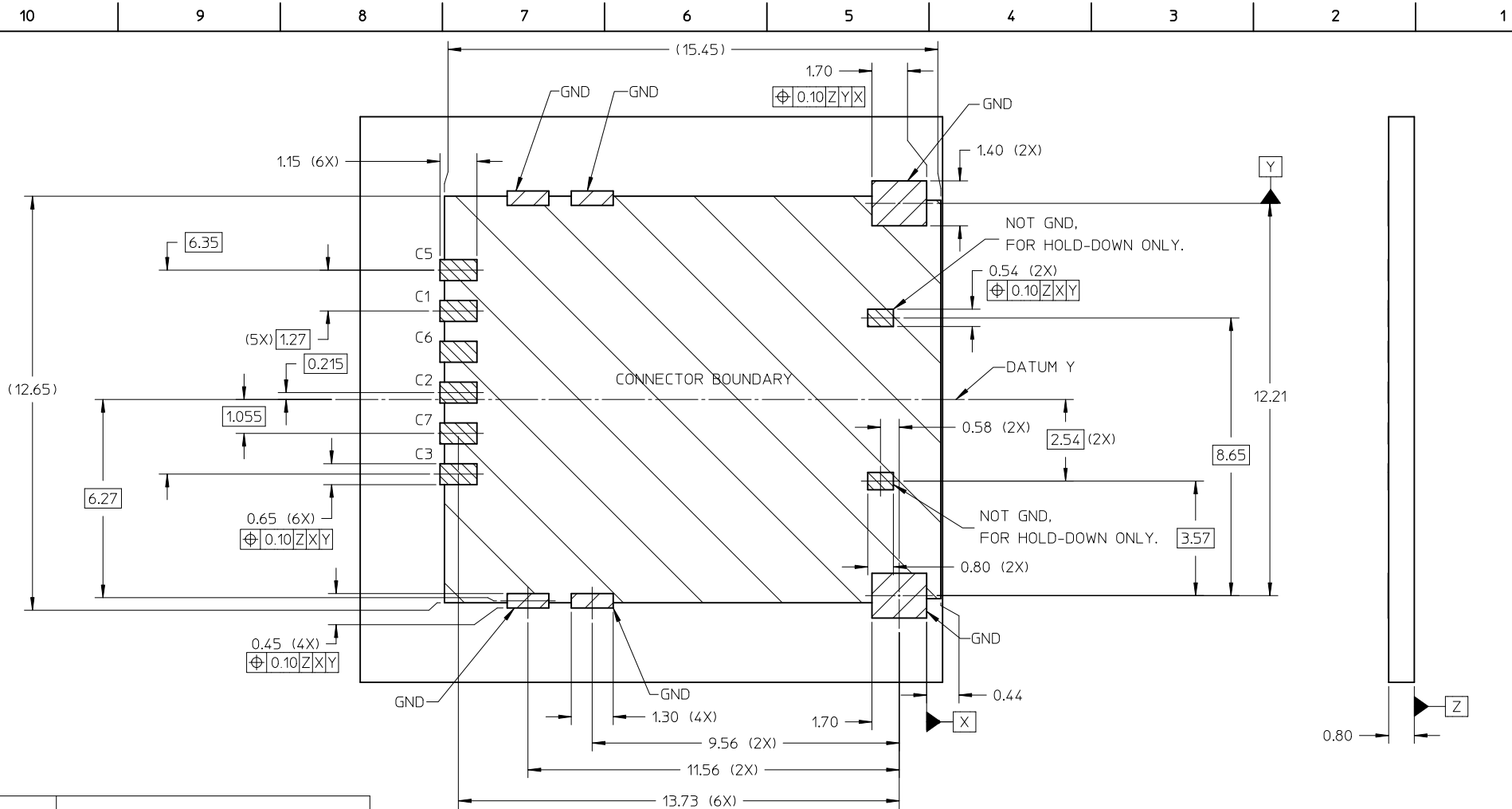


- NOTE:
- MATERIAL: HOUSING : LIQUID CRYSTAL POLYMER (LCP), GLASS FILLED, UL94-V0, COLOR: BLACK  
TERMINAL : COPPER ALLOY  
METAL SHELL : STAINLESS STEEL
  - FINISH:  
TERMINAL:-  
CONTACT : 0.38μM MIN. GOLD OVER 1.27μM NICKEL UNDERPLATE.  
SOLDERTAIL: 1.27μM MIN. MATTE TIN OVER 1.27μM NICKEL UNDERPLATE.  
SHELL :-  
SOLDERTAB : 1.27μM MIN. MATTE TIN OVER 1.27μM NICKEL UNDERPLATE.  
TOP SURFACE : MATTE TIN OVER 1.27μM NICKEL UNDERPLATE.
  - OVERALL (SOLDERTAIL & SOLDERTAB) COPLANARITY 0.08MM, MAX.
  - ALLOWABLE SIM CARD SLIDE OUT W.R.T. DATUM A : 1.00MM MAX.
  - PRODUCT SPECIFICATION: PS-78646-001
  - PACKAGING SPECIFICATION: RPK-78646-001
  - COMPLIANT TO RoHS DIRECTIVE 2002/95/EC AND ELV DIRECTIVE 2000/53/EC.



<b>REV DIM</b> EC NO: S2012-0674 DRWN: JTAN02 CHKD: FCS00 APPR: KHLIM	<b>DESCRIPTION</b> 2012/03/02 2012/03/20 2012/03/21	<b>QUALITY SYMBOLS</b> $F_A=0$ $F_G=0$ $F_P=0$	<b>GENERAL TOLERANCES (UNLESS SPECIFIED)</b>		<b>DIMENSION STYLE</b> MM ONLY		SCALE NTS	DESIGN UNITS METRIC	THIRD ANGLE PROJECTION	
			mm	INCH	DRAWN BY	DATE	TITLE			
			4 PLACES	± ---	± ---	JTAN02	2011/02/24	SALES DRAWING		
			3 PLACES	± ---	± ---	CHECKED BY	DATE	MICRO SIM CONNECTOR		
2 PLACES	± 0.20	± ---	FCS00	2011/03/15	1.45MM HEIGHT, PUSH PULL					
1 PLACE	± ---	± ---	APPROVED BY	DATE	MOLEX INCORPORATED					
ANGULAR ± 3 °			MATERIAL NO. 78646-3001		DOCUMENT NO. SD-78646-001		SHEET NO. 1 OF 3			
DRAFT WHERE APPLICABLE MUST REMAIN WITHIN DIMENSIONS			SIZE A3		THIS DRAWING CONTAINS INFORMATION THAT IS PROPRIETARY TO MOLEX INCORPORATED AND SHOULD NOT BE USED WITHOUT WRITTEN PERMISSION					



RECOMMENDED PCB LAYOUT  
 PWB TOLERANCE : ±0.05MM

PIN NO.	ASSIGNMENT
C1	Vcc (SUPPLY VOLTAGE)
C2	RST (RESET SIGNAL)
C3	CLK (CLOCK SIGNAL)
C4	RESERVED
C5	GND
C6	Vpp (VARIABLE SUPPLY VOLTAGE)
C7	I/O (DATA INPUT/OUTPUT)
C8	RESERVED

REV DIM	DESCRIPTION
A1	

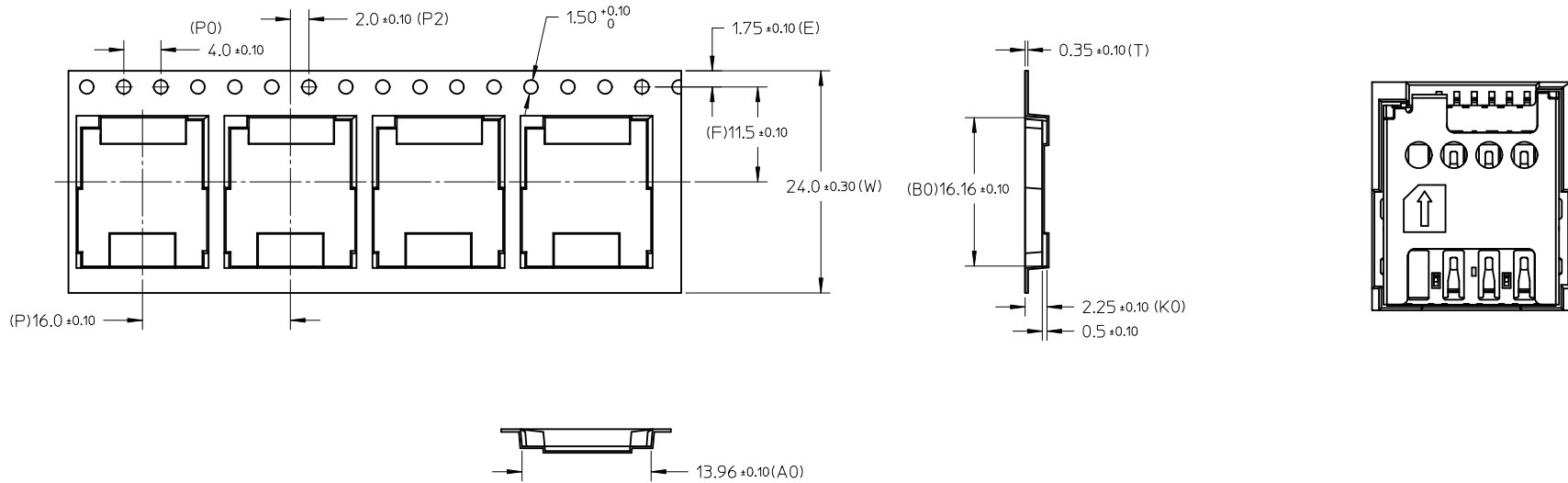
QUALITY SYMBOLS	$\nabla_A = 0$ $\nabla_C = 0$ $\nabla_P = 0$
-----------------	--

GENERAL TOLERANCES (UNLESS SPECIFIED)	<table border="1"> <tr> <th></th> <th>mm</th> <th>INCH</th> </tr> <tr> <td>4 PLACES</td> <td>± ---</td> <td>± ---</td> </tr> <tr> <td>3 PLACES</td> <td>± ---</td> <td>± ---</td> </tr> <tr> <td>2 PLACES</td> <td>± 0.20</td> <td>± ---</td> </tr> <tr> <td>1 PLACE</td> <td>± ---</td> <td>± ---</td> </tr> </table>		mm	INCH	4 PLACES	± ---	± ---	3 PLACES	± ---	± ---	2 PLACES	± 0.20	± ---	1 PLACE	± ---	± ---
	mm	INCH														
4 PLACES	± ---	± ---														
3 PLACES	± ---	± ---														
2 PLACES	± 0.20	± ---														
1 PLACE	± ---	± ---														
ANGULAR ± 3 °																
DRAFT WHERE APPLICABLE MUST REMAIN WITHIN DIMENSIONS																

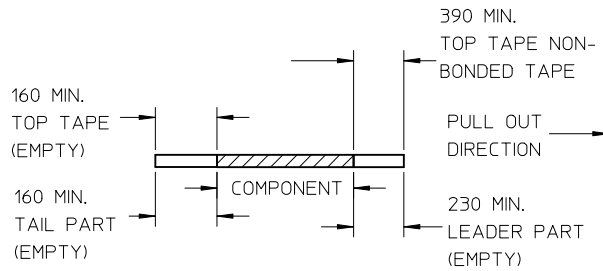
DRAWN BY	DATE
JTAN02	2011/02/24
CHECKED BY	DATE
FCS00	2011/03/15
APPROVED BY	DATE
KHLIM	2011/03/16
MATERIAL NO.	
78646-3001	

DIMENSION STYLE	SCALE	DESIGN UNITS	THIRD ANGLE PROJECTION
MM ONLY	NTS	METRIC	
TITLE			
SALES DRAWING MICRO SIM CONNECTOR 1.45MM HEIGHT, PUSH PULL			
MOLEX INCORPORATED		DOCUMENT NO.	SHEET NO.
78646-3001		SD-78646-001	2 OF 3
THIS DRAWING CONTAINS INFORMATION THAT IS PROPRIETARY TO MOLEX INCORPORATED AND SHOULD NOT BE USED WITHOUT WRITTEN PERMISSION			

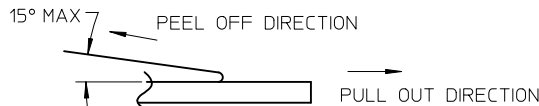
PACKAGING INFORMATION



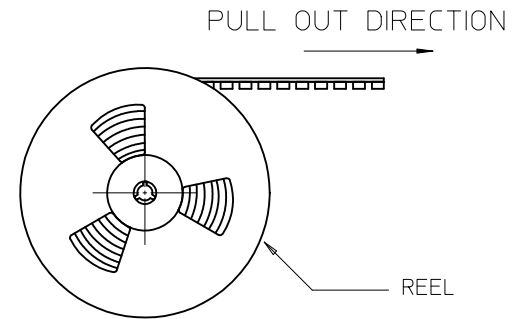
NOTES :  
1. LEADER & TRAILER TAPE



2. PEELING OFF FORCE OF THE TOP TAPE : 20-80gf.  
(PEELING DIRECTION AS SHOWN IN THE FOLLOWING FIGURE)



3. TAPE & REEL SPECIFICATION IS AS PER EIA-481.  
4. TAPE & REEL QTY. : 1500PCS / REEL.  
5. THE TAPE IS TREATED FOR ANTI-STATIC.



REV DIM A1	DESCRIPTION EC NO: S2012-0674 DRWN: JTAN02 CHKD: FCS00 APPR: KHLIM	QUALITY SYMBOLS F <sub>A</sub> =0 F <sub>C</sub> =0 F <sub>P</sub> =0	GENERAL TOLERANCES (UNLESS SPECIFIED)		DIMENSION STYLE MM ONLY	SCALE NTS	DESIGN UNITS METRIC	THIRD ANGLE PROJECTION
			mm	INCH	DRAWN BY JTAN02	DATE 2011/02/24	TITLE SALES DRAWING MICRO SIM CONNECTOR 1.45MM HEIGHT, PUSH PULL	
			4 PLACES	± ---	± ---	CHECKED BY FCS00	DATE 2011/03/15	MOLEX INCORPORATED
			3 PLACES	± ---	± ---	APPROVED BY KHLIM	DATE 2011/03/16	
			2 PLACES	± 0.20	± ---	MATERIAL NO. 78646-3001	DOCUMENT NO. SD-78646-001	SHEET NO. 3 OF 3
			1 PLACE	± ---	± ---	THIS DRAWING CONTAINS INFORMATION THAT IS PROPRIETARY TO MOLEX INCORPORATED AND SHOULD NOT BE USED WITHOUT WRITTEN PERMISSION		
DRAFT WHERE APPLICABLE MUST REMAIN WITHIN DIMENSIONS			ANGULAR ± 3 °					