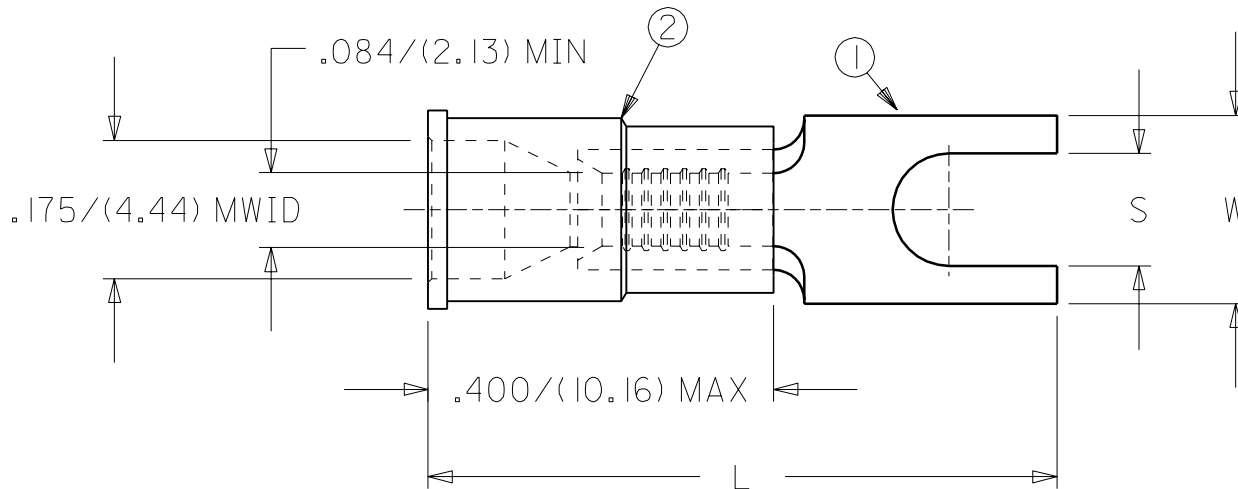


PART NUMBER	STUD SIZE	"W" ±.010/(0.25)	"L" MAX	"S" ±.005/(0.13)
BB-2781-04X	04	.295/(7.49)	.781/(19.8)	.119/(3.02)
BB-2781-06X	06	.295/(7.49)	.781/(19.8)	.146/(3.71)
BB-2781-08X	08	.295/(7.49)	.781/(19.8)	.173/(4.39)
BB-2781-10X	10	.295/(7.49)	.781/(19.8)	.198/(5.03)

DRWG. NO. SD-19200-1001



A	RELEASE CUSTOMER DRAWING ET80481 10/02 DAY
LTR.	REVISIONS

CUSTOMER DRAWING

NOTES:

- MATERIAL: COPPER
STOCK THICKNESS: .031 ±.003/(0.79±0.08)
PLATING: ELECTRO-TIN
- INSULATION: PVC (BLUE)
- MWID=MAXIMUM WIRE INSULATION DIAMETER
- ALL DIMENSIONS=INCHES/(METRIC)

DIMENSIONS SHOWN (METRIC) INCH		
UNLESS OTHERWISE SPECIFIED TOLERANCES: ANGULAR ± 1/2°		
	INCH	METRIC
3 PLACE	± .005	± ---
2 PLACE	± .01	± 0.13
1 PLACE	± ---	± 0.25

DRAFT WHERE APPLICABLE MUST REMAIN WITHIN DIMENSIONS

DRWG. BY	DAY	CHK'D. BY	RWD
APP'D. BY	RWD	SCALE	NO:NE

REVISE ONLY ON CAD SYSTEM			
TITLE			
SPADE TONGUE TERMINAL INSULKRIMP (BLOCK) 16-14 AWG/(1.0-2.5 mm ²)			
molex ETC INC. PINELLAS PARK, FLA. 33781 U.S.A.		SHEET NO.	DATE
PART NO. SEE CHART		DRWG. NO.	SD-19200-1001
FILE NAME 92001001.CST	THIS DRAWING CONTAINS INFORMATION THAT IS PROPRIETARY TO MOLEX-ETC INC. AND SHOULD NOT BE USED WITHOUT WRITTEN PERMISSION.		DIV. SIZE A