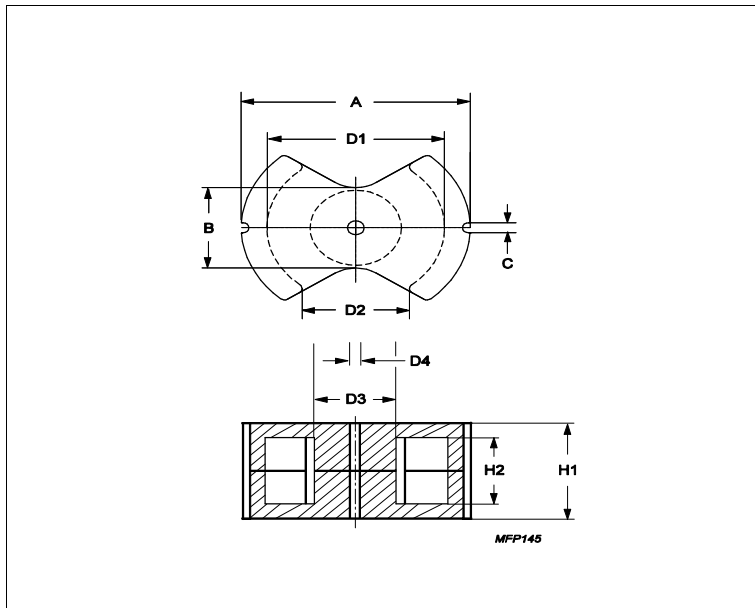


Core **PM50/39**



Effective parameters			
	Parameter	Value	Unit
$\Sigma(I/A)$	core factor (C1)	0.227	mm ⁻¹
Ve	effective volume	31000	mm ³
Le	effective length	84	mm
Ae	effective area	370	mm ²
Amin	minimum area	280	mm ²
m	PM50/39	≈ 280	g/set

Dimensions for product: PM50/39

	Nom	Tol +	Tol -	Max	Min	Unit
A	50.00	0.00	1.70	50.00	48.30	mm
B				23.00		mm
C	5.00	0.00	0.40	5.00	4.60	mm
D1	39.00	1.30	0.00	40.30	39.00	mm
D2					23.40	mm
D3	20.00	0.00	0.60	20.00	19.40	mm
D4	5.40	0.20	0.00	5.60	5.40	mm
H1	39.00	0.00	0.40	39.00	38.60	mm
H2	26.40	0.80	0.00	27.20	26.40	mm

Inductance factor

Material	Value	Tol +	Tol -	Unit
3C94	10000	25%	25%	nH/turns ²

Power loss: 3C94

Measuring conditions			Max	Unit
100 kHz	200 mT	100 °C	16.000	W/set

Bsat

Measuring conditions			Material	Min	Unit
25 kHz	250 A/m	100 °C	3C94	320	mT