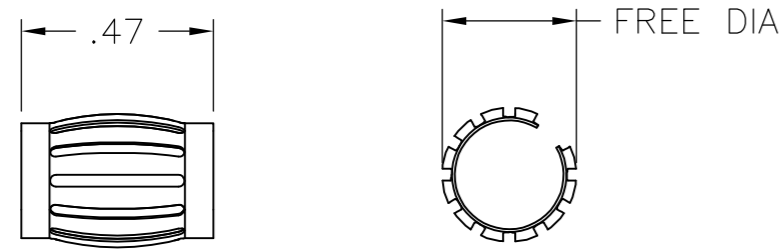
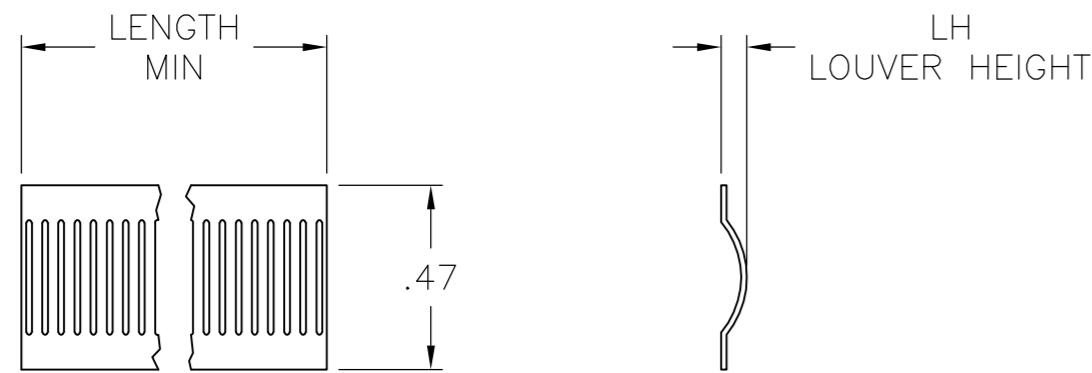


THIS DRAWING IS UNPUBLISHED. RELEASED FOR PUBLICATION  
 © COPYRIGHT BY TYCO ELECTRONICS CORPORATION. ALL RIGHTS RESERVED.

LOC	DIST	REVISIONS					
		P	LTR	DESCRIPTION	DATE	DWN	APVD
FT	0		K	REVISED PER 0G3B-0891-03	11/20/03	SS	GS
			K1	REVISED PER ECO-09-020935	08SEP09	KK	AEG



STYLE B  
(MALE)



STYLE C  
(STRIP)

NOTES:

1. FINISH: SILVER PLATE 200 uIN MIN THICK.
2. FINISH: NICKEL PLATE 40 uIN MIN THICK.
3. FINISH: GOLD PLATE 10 uIN MIN THICK.
4. FINISH: NICKEL PLATE 50 uIN MIN THICK.
5. FINISH: NICKEL PLATE 100 uIN MIN THICK.
6. NOT USED.
7. NOT USED.
8. NOT USED.
9. NOT USED.
10. NOT USED.
11. PLATING NOTES ARE TO BE INTERPRETED AS FOLLOWS, 6-8 AS 6 OVER 8.
12. MATERIAL: CDA172, BeCu.
13. MATERIAL: STAINLESS STEEL.

- 14 PRODUCT IS SOLD BY THE FOOT.
- 15 FINISH: PREPLATED SILVER 200 uIN MIN, OVER NICKEL .040 uIN MIN.
- 16 REELED PRODUCT.
- 17 PRELIMINARY PART NUMBER.
- 18 OBSOLETE PART NUMBER.
- 19 OBSOLETEPARTS: OBSOLETE CIS STREAMLINING PER D.RENAUD/D.SINISI

18	19	STYLE	LH	FREE DIA	MATING DIA REF	PLATING	NUM LOUV	MAT'L THK	REF	PART NUMBER			
18		NOT AVAILABLE	--	--	--	--	--	--	03088	4-192039-5			
18		NOT AVAILABLE	--	--	--	--	--	--	03087	4-192039-4			
18		NOT AVAILABLE	--	--	--	--	--	--	03051	4-192039-3			
18		NOT AVAILABLE	--	--	--	--	--	--	03050	4-192039-2			
19		B	[.036]	[.58]	12	16.51	[.650]	UNPL	43	0.20	[.008]	03119	4-192039-1
19		B	[.032]	[.58]	12	14.22	[.560]	1-2	43	0.15	[.006]	03124	4-192039-0
18		NOT AVAILABLE	--	--	--	--	--	--	--	--	--	--	3-192039-9
19		B	[.038]	[.46]	12	12.7	[.500]	--	34	0.20	[.008]	03122	3-192039-8
19		B	[.038]	[.46]	12	12.7	[.500]	1-2	34	0.20	[.008]	03121	3-192039-7
19		B	[.038]	[.46]	12	12.7	[.500]	UNPL	34	0.20	[.008]	03048	3-192039-6
19		B	[.032]	[.46]	12	12.7	[.500]	1-2	--	0.15	[.006]	03129	3-192039-5
19		B	[.032]	[.46]	12	12.7	[.500]	UNPL	34	0.15	[.006]	03110	3-192039-4
19		B	[.034]	[.33]	12	9.52	[.375]	1-2	24	0.20	[.008]	03148	3-192039-3
19		OBSOLETE										03042	3-192039-2
18		SUPERSEDED BY 2-192039-7										03041	3-192039-1
		B	[.036]	[.31]	12	7.9	[.311]	3-2	21	0.20	[.008]	03082	3-192039-0
		B	[.036]	[.31]	12	7.9	[.311]	1-2	21	0.20	[.008]	03036	2-192039-9
19		OBSOLETE										03035	2-192039-8
19		B	[.036]	[.31]	12	7.9	[.311]	UNPL	21	0.20	[.008]	03066	2-192039-7
19		OBSOLETE										03120	2-192039-6
18		NOT AVAILABLE	--	--	--	--	--	--	--	--	--	03034	2-192039-5
18		NOT AVAILABLE	--	--	--	--	--	--	--	--	--	03030	2-192039-4
		B	[.036]	[.30]	12	6.3	[.248]	1-2	17	0.20	[.008]	03027	2-192039-3
		B	[.036]	[.30]	12	6.3	[.248]	UNPL	17	0.20	[.008]	03026	2-192039-2
		B	[.033]	[.27]	12	6.3	[.248]	1-2	16	0.20	[.008]	03140	2-192039-1
19		B	[.033]	[.27]	12	6.3	[.248]	UNPL	16	0.20	[.008]	03139	2-192039-0
19		B	[.036]	[.25]	12	6.0	[.236]	3-2	15	0.20	[.008]	03024	1-192039-9
19		B	[.034]	[.20]	12	4.0	[.157]	4	9	0.20	[.008]	03017	1-192039-8
		B	[.034]	[.20]	12	4.0	[.157]	3-2	9	0.20	[.008]	03016	1-192039-7
		B	[.034]	[.20]	12	4.0	[.157]	UNPL	9	0.20	[.008]	03071	1-192039-6
		OBSOLETE										03015	1-192039-5
		B	[.032]	[.20]	12	4.0	[.157]	3-2	9	0.15	[.006]	03014	1-192039-4
		B	[.032]	[.20]	12	4.0	[.157]	4	9	0.15	[.006]	03128	1-192039-3
		B	[.032]	[.20]	12	4.0	[.157]	UNPL	9	0.15	[.006]	03073	1-192039-2
		B	[.020]	[.20]	13	4.0	[.157]	UNPL	9	0.12	[.005]	03091	1-192039-1
14		C	[.038]		12			3-2	--	0.20	[.008]	03115	1-192039-0
18		NOT AVAILABLE			12			--	--	--	--	--	192039-9
19		14 C	[.038]		12			1-2	--	0.20	[.008]	03116	192039-8
19		OBSOLETE	14 C	[.038]	12			UNPL	--	0.20	[.008]	03078	192039-7
19		OBSOLETE	14 C	[.034]	12			3-2	--	0.15	[.006]	03003	192039-6
		14 C	[.034]		12			1-2	--	0.15	[.006]	03094	192039-5
		14 C	[.034]		12			UNPL	--	0.15	[.006]	03057	192039-4
19		OBSOLETE	14 C	[.020]	13			UNPL	--	0.12	[.005]	03138	192039-3
		18	NOT AVAILABLE		--			--	--	--	--	03079	192039-2
		18	NOT AVAILABLE		--			--	--	--	--	03067	192039-1

THIS DRAWING IS A CONTROLLED DOCUMENT.		DWN 09-12-91	RA JAYNE	Tyco Electronics Corporation Harrisburg, PA 17105	
DIMENSIONS: INCHES		CHK 09-12-91	RA JAYNE	CONTACT BAND, LAIHS, MALE	
TOLERANCES UNLESS OTHERWISE SPECIFIED:		APVD		SIZE CAGE CODE DRAWING NO RESTRICTED TO	
0 PLC ± -		PRODUCT SPEC		A2 00779 C=192039	
1 PLC ± -		APPLICATION SPEC		SCALE NTS SHEET 1 OF 2 REV K1	
2 PLC ± .02		WEIGHT			
3 PLC ± .010		CUSTOMER DRAWING			
4 PLC ± -					
ANGLES ± -					
FINISH -					
MATERIAL SEE TABLE					

